

Technical requirements

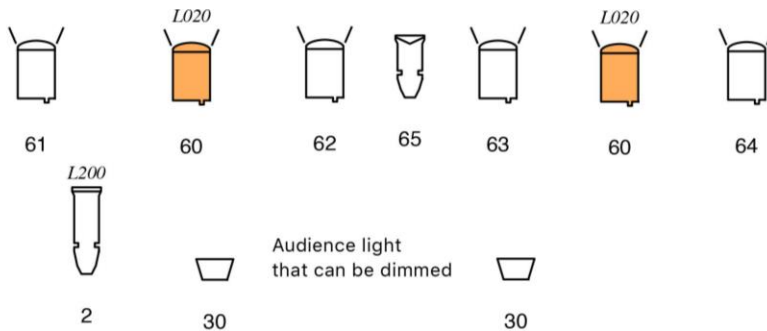
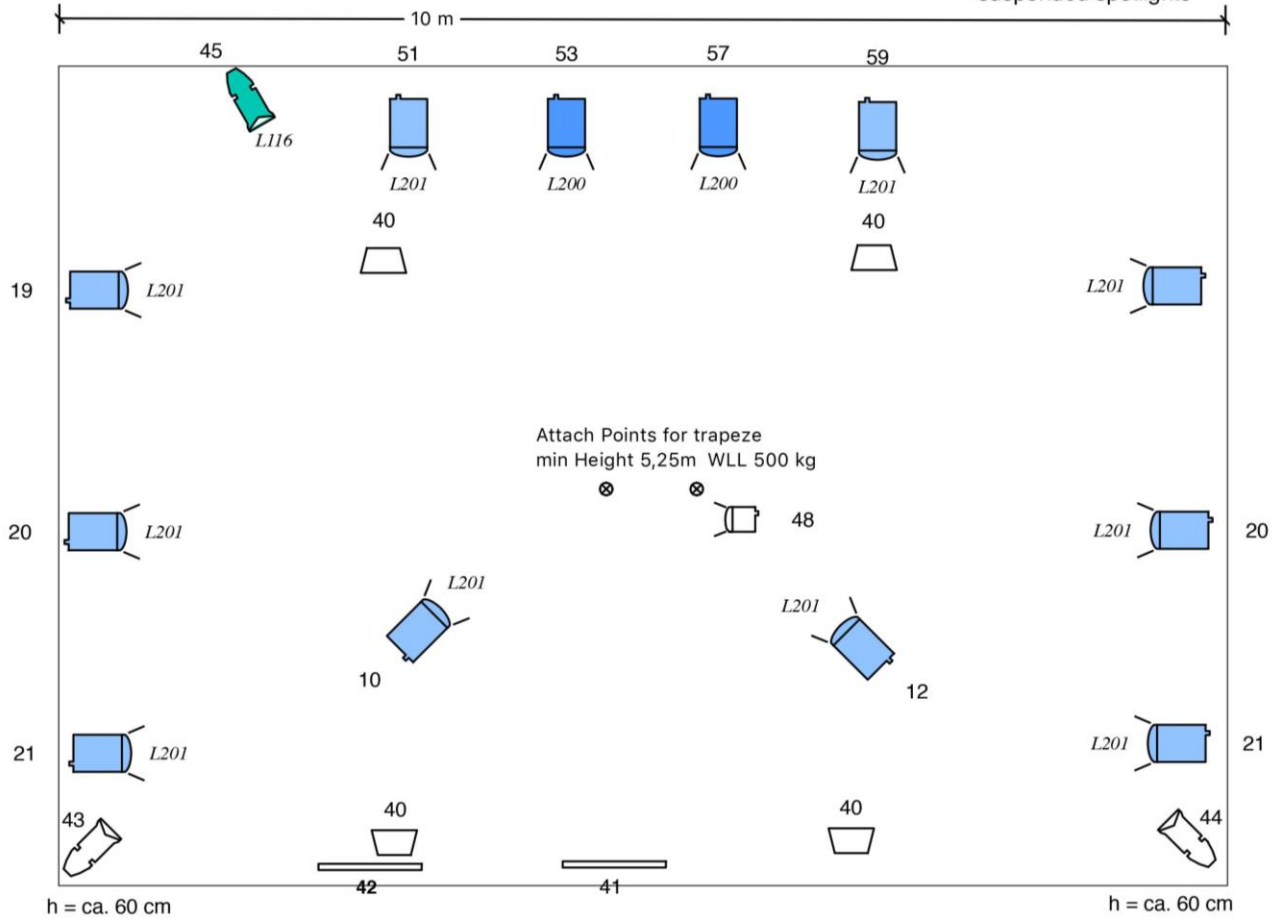
- Stage:** stage width min. 8m ideal 10 m
stage depth min. 6m ideal 7 m
height above stage min. 5.50m
- Floor** **black PVC dance floor**
- Curtains** If walls in the back and on the sides are dark, we prefer to use no side or back curtains.
- Rigging** The performer uses a trapeze. For this we need 2 rigging points at about centre stage, 65-75cm apart. Minimum suspension height 5.00m., Working Load limit. 500kg each. If only one rigging point is available, we can suspend a rigging bar with guy wires. Please contact us beforehand to find the best solution.
- Set:** We bring a large black wooden box 190X80X60cm, a microphone with a stand and a trapeze
- Lights:** (see lighting plan)
- Dimmers: about 24 channels 2000 W each.
- Spotlights:
 - 18 PC spots 1000 W
 - 1 PC spot 500 - 650W
 - 4 profile spots 25-50° 750-1000W
 - 1 profile spot 15-35° 750-1000W
 - 2 strip lights 1m, tungsten (or eventually LED warm-white)
- 2 stands that allow profile spots to be positioned 60cm above stage level
 - Spotlights above the stage area are ideally suspended 6m high.
 - work light on stage which can be turned on/off from the light control position
 - audience light which can be dimmed
- Sound:** - Sound mixer with stereo entrance (mini-jack for computer) and 1 microphone entrance
 - 1 XLR microphone entrance on stage
 - 2 monitor speakers up-stage
 - PA. with subwoofer, adapted to the theatre
- Staff from theatre:** 1 technician with good knowledge (stage, light, sound) for setup and focus lights (about 3 hours)
- Dressing rooms:** The company needs dressing rooms for 1 person, with mirrors, shower and toilet. Water, fresh fruit and snacks are highly appreciated!
- Set-Up:** Begin 8 hours before first performance. The stage will be occupied with set-up, focus lights, and rehearsal until the time of the entrance of the audience. Please inform us if you can do some light setup before our arrival. We will confirm a specific get-in time.

Notice: If you cannot fulfil these technical requirements, have questions or if you foresee problems, please contact us and send a stage plan and a list of the available technical material. We will try to find a solution.

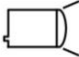





Upside Inside

Lighting Plan 2
floor spotlights

Lighting Plan 1
suspended spotlights



Dimmers: ca. 24 channels 2kW

 ca. 18 PC 1000W	 4 Profile 25-50°
 1 PC 500 - 650W	 4 Flood 1000W or other type of working lights
 1 Profile 15-35°	 2 Striplight 1m tungsten or LED warmwhite